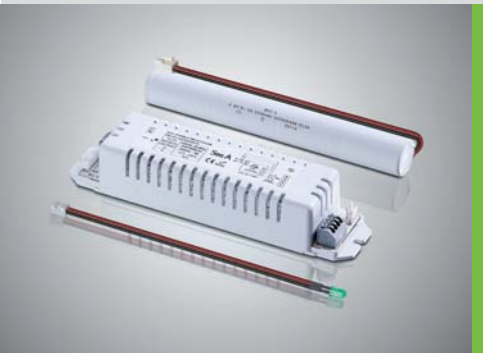


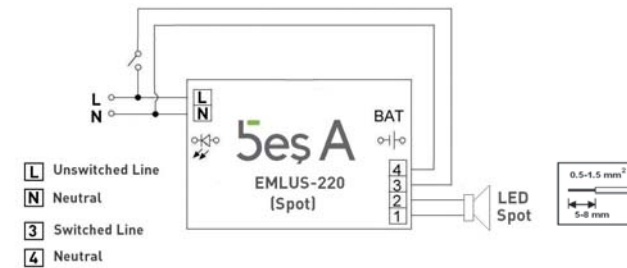
VOLTAGE	CAPACITY	CELL TYPE	CELL SIZE (mm)	QTY OF CELLS	DIMENSIONS (mm)	WEIGHT (kg)
4,8 V	1800 mAh	SC	23	4	23 x 180±4 x 23	0,200
4,8 V	4000 mAh	D	33	4	33 x 248±4 x 33	0,520

Please refer to "Battery Details Table" in "Emergency Lighting Solutions Overview" section of the catalogue for further battery information.

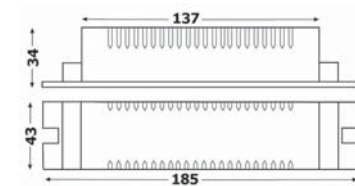


- Compatible with 220 V / up to 5 W LED spot
- Sustained constant 100% lighting
- Non-maintained operation
- Emergency lighting function by interruption of the unswitched phase
- 1 - 3 h duration
- DC voltage supply for LED Driver
- Short-circuit, open-circuit and overload protection
- High-temperature Ni-Cd battery cells
- Overcharge and deep discharge protection
- Polarity reversal protection for battery
- Charge status display with green LED
- Polycarbonate case
- Simple connectable terminal block
- Optional - 110 VAC compatibility

WIRING DIAGRAM



TECHNICAL DRAWING



In accordance with EN 61347-1, EN 61347-2-7 and EN 61347-2-13 standards.

TECHNICAL DATA

SUPPLY VOLTAGE :	230 VAC 50 / 60 Hz	EMERGENCY LUMEN FACTOR (BLF) :	%100
AMBIENT TEMPERATURE (ta) :	-10°C ... +50 °C	MAX. OUTPUT POWER :	5 W
MAX. CASING TEMPERATURE (tc) :	70 °C	OUTPUT VOLTAGE :	160 ... 310 VDC
RATED DURATION :	1 / 3 h	PROTECTION CLASS :	IP 20
BATTERY CHARGING TIME :	24 / 48 h	INSULATION CLASS :	II

PRODUCT LIST

PRODUCT CODE	BATTERY CAPACITY	RATED POWER (W)*	MAINS CURRENT (A)*	POWER FACTOR (PF)*	DIMENSIONS (mm)	WEIGHT (kg)	QTY in CARTON BOX
EMLUS-220/5W	4,8 V / 1800 mAh (1 h)	3,55	0,019	0,80	43 x 185 x 34	0,225	30
	4,8 V / 4000 mAh (3 h)	4,60	0,023	0,86	43 x 185 x 34	0,225	30

* Measured under 230 V mains.