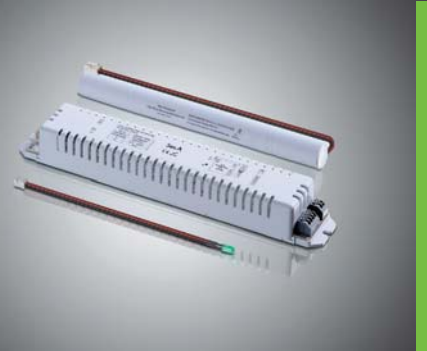


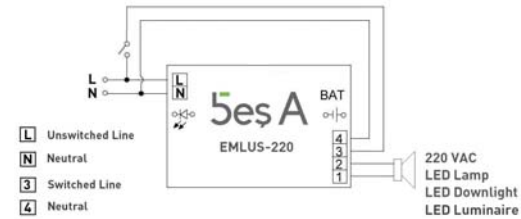
- Compatible with 220 V LED tube and spot lighting
- Sustained constant 100% lighting
- Non-maintained operation
- Emergency lighting function by interruption of the unswitched phase
- 1 - 3 h duration
- DC voltage supply for LED Driver
- Short-circuit, open-circuit and overload protection
- High-temperature Ni-Cd battery cells
- Overcharge and deep discharge protection
- Polarity reversal protection for battery
- Charge status display with green LED
- Polycarbonate case
- Simple connectable terminal block
- Optional - 110 VAC compatibility



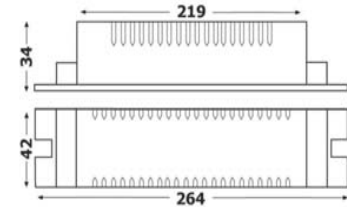
VOLTAGE	CAPACITY	CELL TYPE	CELL SIZE (mm)	QTY OF CELLS	DIMENSIONS (mm)	WEIGHT (kg)
7,2V/3000mAh	3000 mAh	C	26	6	26 x 300±3 x 26	0,480
7,2V/6000mAh	3000 mAh	C	26	12	52 x 300±3 x 26	0,960
12V/3000mAh	3000 mAh	C	26	10	52 x 250±3 x 26	0,800
12V/4000mAh	4000 mAh	D	33	10	66 x 300±3 x 33	1,250
12V/5000mAh	2500 mAh	C	26	20	52 x 250±3 x 52	1,600
12V/6000mAh	3000 mAh	C	26	20	52 x 250±3 x 52	1,600
12V/8000mAh	4000 mAh	D	33	20	66 x 300±3 x 66	2,600

Please refer to "Battery Details Table" in "Emergency Lighting Solutions Overview" section of the catalogue for further battery information.

WIRING DIAGRAM



TECHNICAL DRAWING



In accordance with EN 61347-1, EN 61347-2-7 and EN 61347-2-13 standards.

TECHNICAL DATA

SUPPLY VOLTAGE :	230 VAC 50 / 60 Hz	EMERGENCY LUMEN FACTOR (BLF) :	%100
AMBIENT TEMPERATURE (ta) :	-10°C ... +50 °C	MAX. OUTPUT POWER :	30 W
MAX. CASING TEMPERATURE (tc) :	70 °C	OUTPUT VOLTAGE :	200 ... 340 VDC
RATED DURATION :	1 / 3 h	PROTECTION CLASS :	IP 20
BATTERY CHARGING TIME :	24 / 96 h	INSULATION CLASS :	II

PRODUCT LIST

PRODUCT CODE	BATTERY CAPACITY	RATED POWER (W)*	MAINS CURRENT (A)*	POWER FACTOR (PF)*	DIMENSIONS (mm)	WEIGHT (kg)	QTY in CARTON BOX
EMLUS-220/10W	7,2 V / 3000 mAh (1 h)	4,70	0.023	0.86	42 x 264 x 34	0,285	25
	7,2 V / 6000 mAh (3 h)	6,30	0.030	0.90			
EMLUS-220/20W	12 V / 3000 mAh (1 h)	6,75	0.034	0.87	42 x 264 x 34	0,285	25
	12 V / 6000 mAh (3 h)	6,75	0.034	0.87			
EMLUS-220/25W	12 V / 4000 mAh (1 h)	6,75	0.034	0.87	42 x 264 x 34	0,285	25
	12 V / 8000 mAh (3 h)	6,75	0.034	0.87			
EMLUS-220/30W	6,75	0.034	0.87	42 x 264 x 34	0,285	25	
	12 V / 5000 mAh (1 h)	6,75	0.034				0.87

* Measured under 230 V mains.